

**ISSUE:**

Issued for Permit  
08.05.2016

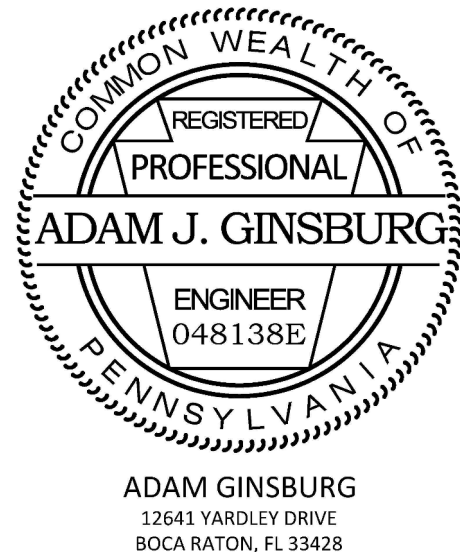


# BASE<sup>4</sup>

BASE4  
9858 GLADES ROAD, #237  
BOCA RATON, FLORIDA 33434  
1.720.72BASE4 [www.base-4.com](http://www.base-4.com)

JEFF GAITHER, AIA  
4101 Woodlynn Ln  
Orlando, FL 32812

Seal:



PROJECT: B4-067-1603

## Hampton Inn & Suites

New Stanton, PA 15672

OWNER

Stanton Hospitality LLC

52 Blueberry Lane,  
Grove City, PA 16127

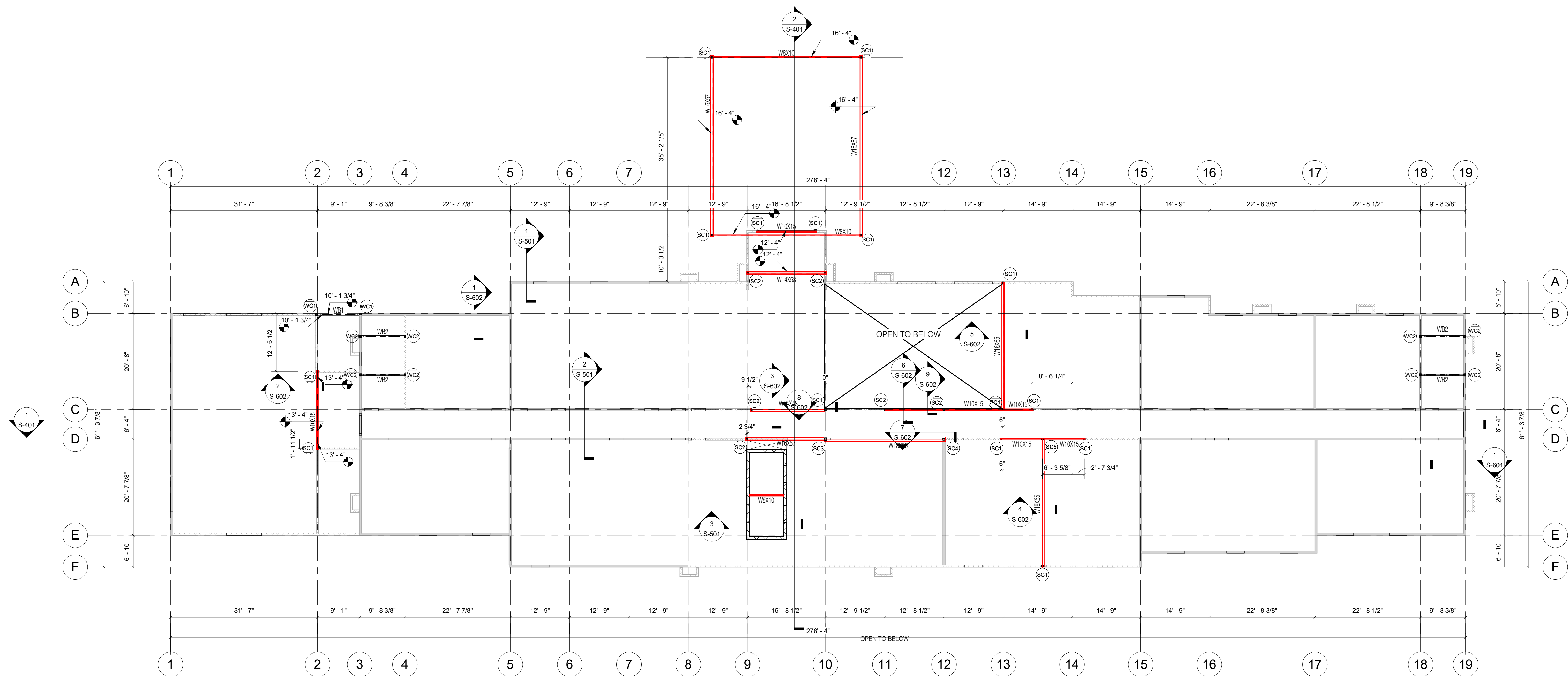
THESE DRAWINGS ARE FOR REVIEW OF DESIGN AND SCOPE DESCRIPTION ONLY. NO REPRESENTATION IS MADE TO THE ACCURACY OF THE DRAWINGS WITH RESPECT TO EXISTING DIMENSIONS OR CONDITIONS. ALL CONSULTANTS AND CONTRACTORS MUST VERIFY ANY AND ALL DIMENSIONS AND CONDITIONS WHICH ARE CRITICAL TO THEIR WORK. THESE DRAWINGS ARE INSTRUMENTS OF SERVICE AND ARE THE INTELLECTUAL PROPERTY OF JMAC ARCHITECTS. ANY UNAUTHORIZED USE OR REPRODUCTION IS PROHIBITED.

[illegible]

## 2ND FLOOR STEEL FRAMING PLAN

$$3/32'' = 1'-0''$$

# S-202.1



## 2ND FLOOR STEEL FRAMING PLAN

SCALE: 3/32"=1'-0"

- NOTES:  
1. REFER TO ARCH & MEP FOR OPENING DIMENSIONS ON THIS FLOOR.  
2. TOP OF STRUCTURAL STEEL IS 12'-4" UNLESS NOTED OTHERWISE.  
3. "U" SIGNIFIES DUCT GOES UNDER BEAM AT THIS LOCATION.  
4. "T" SIGNIFIES DUCT GOES THROUGH BEAM AT THIS LOCATION.